



**Space solutions for nurseries,
schools, clubs & events**

Your project is unique. Just like our execution.

Portable and sanitary cabins

In the public sector and at local authorities, the need for suitable space solutions is diverse – from the expansion of nursery schools, the provision of public sanitary facilities to club houses. We offer you the right space concept for your individual requirements.

THE VERSATILE SPACE SOLUTION:

- Modular construction with flexible wall elements enables variable room sizes
- Robust steel profile frame
- Optimal thermal insulation
- Various extras available
- Can be used all year round regardless of the weather
- Delivery as a flat-pack Transpack Cabin® possible as well

**CONTAINEX
EXTRA**

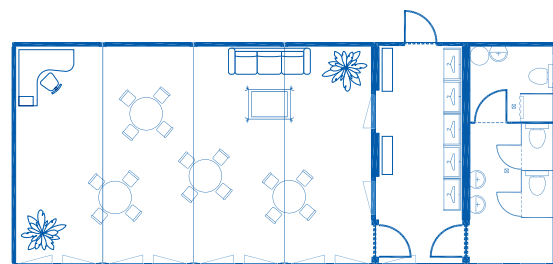
*Durable
thanks to
robust
construction*



BM/SA 20'

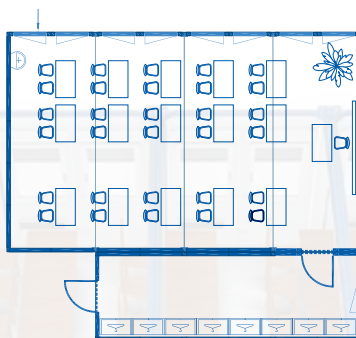
L 6.055 mm
W 2.435 mm
H 2.800 mm

LAYOUT EXAMPLES:



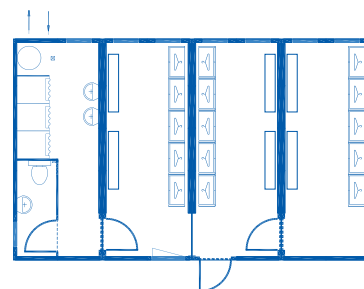
6x BM 20'
~79m²

1-group nursery



4x BM 20'
+
1x BM 24'
~68m²

School



4x BM 20'
~53m²

Changing rooms with sanitary facilities for sports clubs

Further sizes can be found at www.containex.com.



FLEXIBLE PANEL SYSTEM:



Door



Window



Nursery window



Sanitary/air conditioning window sash



Fixed glazing

Further panel types can be found at www.containex.com. Country specific designs/ variations possible.

Storage container

With their standardised burglary protection and numerous equipment options, CONTAINEX storage containers can be used in a variety of ways: as a small mobile garage in the school playground, flexible storage space on sports fields or as a storage room for technical equipment on the construction site.



LC 10'

L 2.991 mm
W 2.438 mm
H 2.591 mm

Further sizes can be found at www.containex.com.

You want comfortable spaces. We will help you with that.

Schools and nurseries

Laugh, play and learn – your little ones can do all of this in a CONTAINEX space solution. Our years of experience in planning and providing temporary and permanent space solutions guarantee quick and easy processing.

**CONTAINEX
EXTRA**

*Safe and
child-friendly
designs*

SAFETY AND WELLBEING:

- Well-lit, bright rooms thanks to full glazing
- Pleasant indoor climate thanks to high-quality insulation materials
- Reuse of modules for other purposes (e.g. as a youth club or club house, events, etc.)



Individual
room design



Child-friendly
design



Clean sanitary
solutions





Design options

The safety of your little ones is our top priority. Nevertheless, your space solution should also be practical and comfortable. Thanks to our extensive options, you can design them individually for your intended use.

INDIVIDUAL EXTERIOR DESIGN:

- Stylish full glazing with top vent
- High-quality paintwork according to CONTAINEX-RAL chart
- Canopy and fascia



SAFE AND HIGH QUALITY INTERIOR:

- Use of certified fire rated components
- Shatter-proof lights
- Child-proof power sockets with increased protection
- Acoustic or sound-absorbing ceiling
- Nursery school window
- Child-friendly sanitary fittings and toilet cubicles
- Wall-to-wall floor cover
- Burn protection



You want comfort for your team. We will gladly support you.



Events and clubs

Whether as a clean sanitary solution, ticket office cabins at major events, spacious meeting rooms or lounges and hospitality areas at sporting events – we offer you a tailor-made space solution for every need.

FUNCTIONAL AND COMFORTABLE TURN-KEY SOLUTION:

- Durable construction thanks to high-quality materials
- Numerous equipment options (modern glazing, etc.)
- Individual paintwork and signage to match your club's look
- Sanitary solutions available in various combinations
e.g. female/male/accessible/event sanitary cabin

THE HYGIENIC SANITARY SOLUTION FOR EVENTS:

- Promptly available and set up quickly
- Available in different versions
- Up to 16 toilets or 12 showers in one sanitary cabin
- Showers with hot water boiler



Fresh water instead
of chemicals



Interior and exterior design

If you are pursuing your hobby, you should have the right environment. Our portable and sanitary cabins can be tailored specifically to your needs thanks to numerous equipment options.

ATTRACTIVE FITTINGS:

- Attractive appearance thanks to large glazings
- Individual paintwork optimally coordinated with your club colours
- Window and door grilles for increased security
- Canopy and fascia
- Hot water supply (water connection through the floor or recessed in the wall)



**CONTAINEX
EXTRA**

*Rental or
purchase
possible*



You look for safety. We show you the way.



Fire protection



Our fire protection system is suitable for single cabins and modular buildings. It is characterised by a quick assembly and high fire resistance classes.

DURABLE COMPONENTS:

- **Fire protection for the roof:** fire resistance REI30, 60 or 90, depending on the type of insulation
- **Fire protection for wall elements:** fire resistance EI30 or 90, depending on the type of insulation

REI/EI: R = load bearing capacity, E = partition, I = insulation

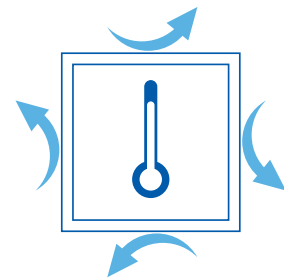
Thermal insulation

Rely on optimal thermal insulation all around.

EQUIPPED FOR ALL TEMPERATURES:

- **Roof insulation:** U_{\max} -value of 0.15 to 0.36
- **Wall insulation:** U_{\max} -value of 0.20 to 0.65
- **Floor insulation:** U_{\max} -value of 0.20 to 0.55
- **Window insulation:** U_g -value of 0.8 to 1.4
- **Door insulation:** U_d -value of 1.7 to 1.8
- **Insulation options:** mineral wool, PU (polyurethane), PIR (polyisocyanurate) or rock wool

U_{\max} value = maximum heat transfer coefficient in W/m^2K
 U_g value = heat transfer coefficient of the pane package in W/m^2K
 U_d value = heat transfer coefficient of the door in W/m^2K



**CONTAINEX
EXTRA**

*Energy-efficient
construction and
a pleasant indoor
climate*

Top quality new and used

Quality is very important to us. That's why our portable and sanitary cabins are produced in our own European production plants.

- Our own European certified production plants
- State-of-the-art and environmentally-friendly manufacturing techniques
- Use of high-quality materials

In addition to our newly produced cabins and containers, we also offer used cabins, containers and modular buildings. „TOP USED“ identifies high-quality used CONTAINEX cabins and containers and guarantees defined quality and testing standards.



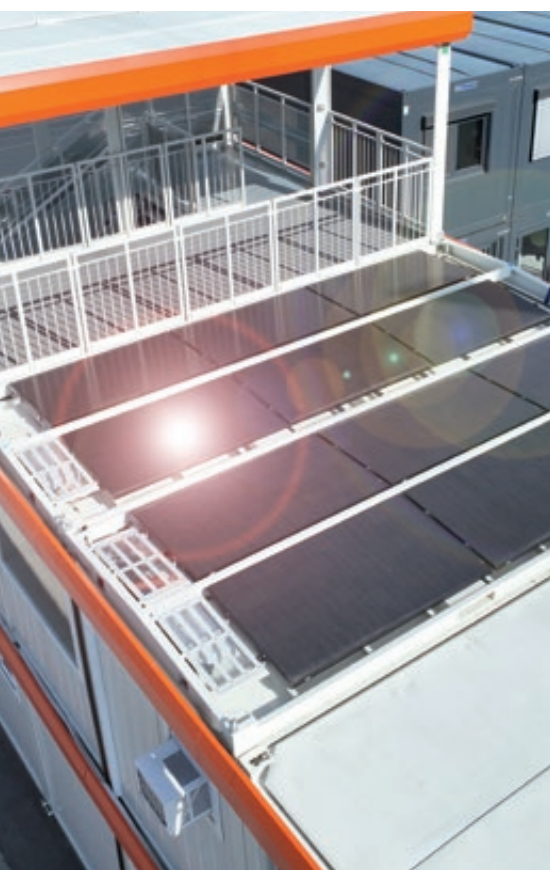
TIP



Did you know that we offer a buy-back guarantee* for all modular buildings as well as individual cabins and containers purchased from us?

We are convinced of the high quality and sustainability of our products. That is why you benefit from our buyback guarantee* for every CONTAINEX cabin or container purchased new or used. A cost-effective exchange of your old cabin or container for a brand new one is also possible.

*Buy-back guarantee applies to reusable containers/cabins in the European Union, Switzerland, Norway and the United Kingdom; limited to a maximum of 20 years. Beyond that by separate agreement.



Energy saving options

In addition to high-quality thermal insulation and triple glazing, we offer a large number of equipment elements which protect the environment and reduce your costs.

EFFICIENT USE OF ENERGY:

- Photovoltaic module*
- LED lighting
- E-convector with digital control (alternative heating systems possible)
- Central heating control*
- Motion or occupancy sensor*
- Contactless sanitary fittings and stainless steel components*

* Available in selected countries.



You want the best support. We are here for you.



Advice & service

Customer and service orientation are the main focus at CONTAINEX an Austrian family-owned company. We are happy to help!

- Decades of experience
- Advice and planning on site and in your native language
- Long-term supply of spare parts
- Various financing options
- Buy-back guarantee for CONTAINEX cabins and containers



Environmental protection – made in Europe

We place particular emphasis on compliance with strict environmental and quality standards. These are summarised in our CONTAINEX GREEN technology certificate.

CONTAINEX GREEN TECHNOLOGY STANDS FOR:

- **Energy efficient and eco-friendly:** We only produce in our own certified production plants in Europe.
- **CO₂ reduction:** We place great emphasis on reducing CO₂ emissions as well as pollutants during production, transport and ongoing container/cabin use.
- **Recycling:** We use materials that can be recycled.
- **Control:** We ensure that environmental audits and quality controls are continuously carried out in our production plants.
- **Sustainability:** Our cabins are extremely durable – because quality comes before quantity.

**Convince yourself of our high standards.
We are happy to help you.**



You have high expectations. We want to exceed them.

References

The possible uses of our modules and containers are nearly unlimited. Whether for a nursery space, as a classroom, waiting room, ticket booth, project office, club house or changing room: After more than 40 years in this industry, we know how to delight customers with well thought-out solutions.

WE LOOK FORWARD TO NEW CHALLENGES.

All images and equipment options shown in the brochure are symbolic.
The actual design may vary.





SPACE
AT ONCE

CONTAINEX



CONTAINEX

The specialist for mobile space solutions

CONTAINEX Container-Handelsgesellschaft m.b.H.

AT-2355 Wiener Neudorf, IZ NÖ-Süd, Straße 14

Phone: +43 2236 601-0

E-mail: ctx@containex.com

www.containex.com

a **WALTER GROUP** company