

# Electricity from solar power: new photovoltaic module

” Sustainable & cost-efficient “

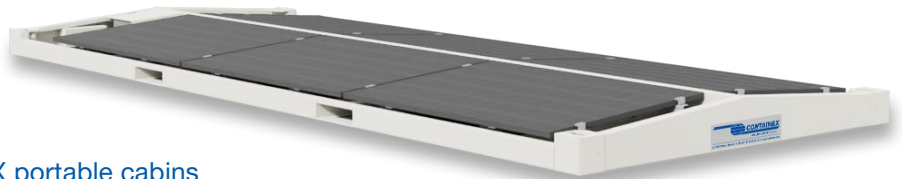




## Photovoltaic module

### YOUR ADVANTAGES:

- High power generation thanks to the latest PV technology and optimised design
- Compatible with all 20' CONTAINEX portable cabins and sanitary cabins
- Analysis and monitoring via app (optional)



Technical data	
Dimensions	6,055 x 2,435 x 260 mm (length x width x height)
Output	2.55 kWp (6 nos. PV modules of 425 Wp each)
Electrical connection*	CEE external connection 32A/400 V CEE external connection 32A/230 V** (input and output)
Conformity of inverter	EN 50549-1:2019, VDE-AR-N 4105:2018, VFR2019, IEC/EN 62109-1/-2, IEC/EN 61000-6-1/-2/-3/-4, IEC/EN 61000-3-2/-3
Frequency	50 Hz
Snow load	250 kg/m <sup>2</sup>
Storage	Stackable up to 8 high

\* The customer / operator must check compliance with the regulations of the respective energy supply company. Electrical testing and commissioning may only be carried out by authorised specialist personnel. Retrofit KIT for zero-feed operation optionally available.

\*\* Specific for GB

Cost-efficient  
and CO<sub>2</sub>-  
saving

- ✓ Interconnectable
- ✓ Loading with crane or forklift
- ✓ Low transport costs  
– up to 16 pcs per truck

### Contact us

Phone GB: +44 20 353066-20, IE: +353 1 54 607-14, international: +43 2236 601-0

E-mail: [ctx@containex.com](mailto:ctx@containex.com)

[www.containex.com](http://www.containex.com)

